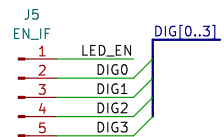
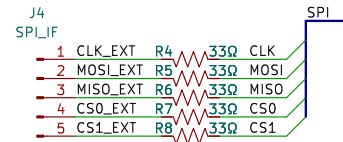
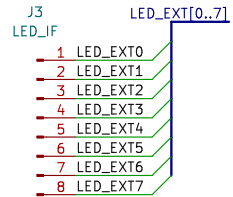
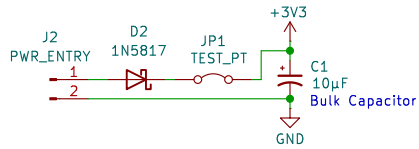
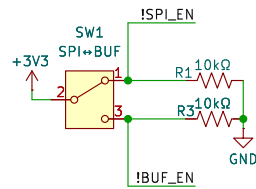


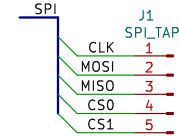
EXT IF



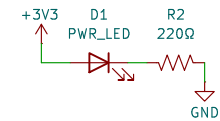
MODE SEL



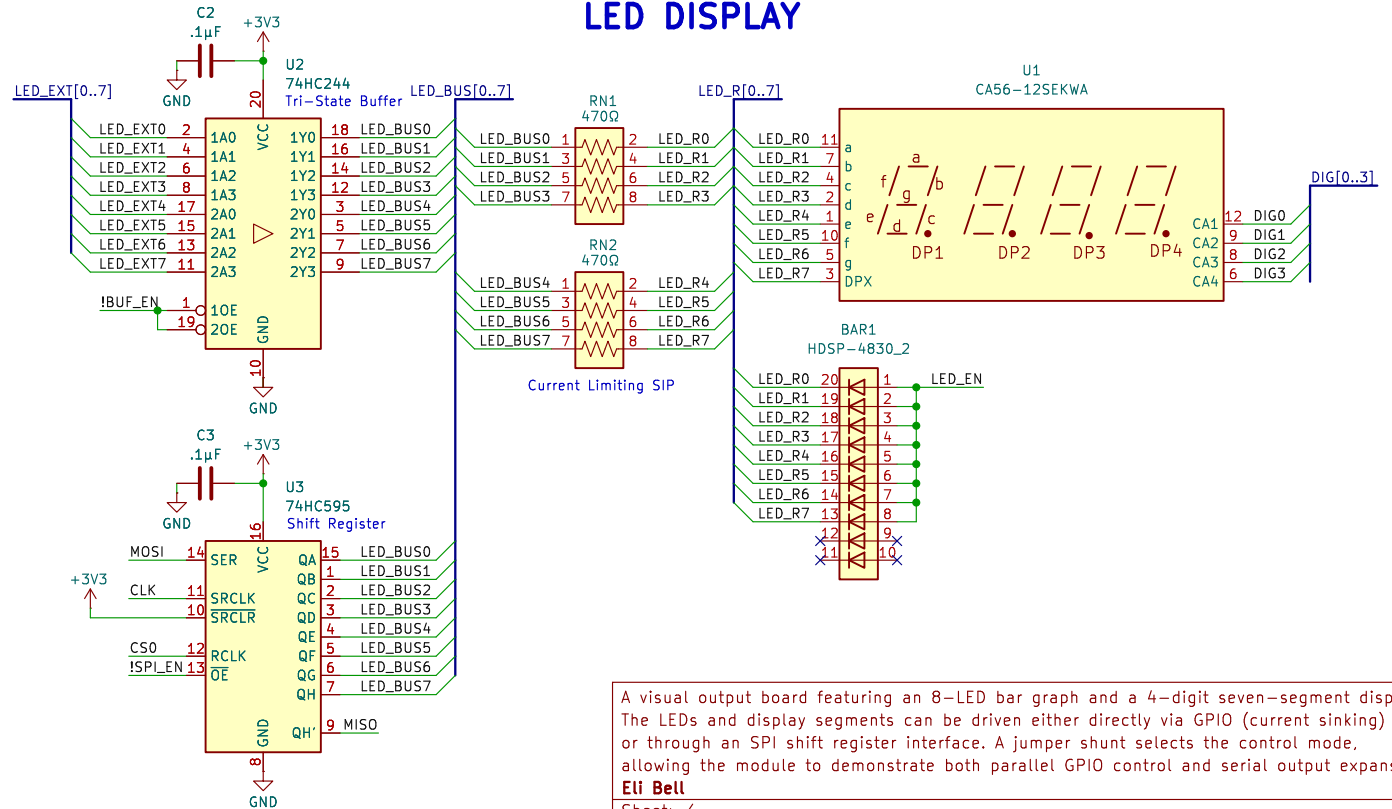
SPI TAP



PWR LED



LED DISPLAY



A visual output board featuring an 8-LED bar graph and a 4-digit seven-segment display. The LEDs and display segments can be driven either directly via GPIO (current sinking) or through an SPI shift register interface. A jumper shunt selects the control mode, allowing the module to demonstrate both parallel GPIO control and serial output expansion.

Eli Bell

Sheet: /
File: CSC202_LED_MODULE.kicad_sch

Title: CSC_202_LED_MODULE

Size: A4 Date: 2026-02-05

KiCad E.D.A. 9.0.1

Rev: A

Id: 1/1